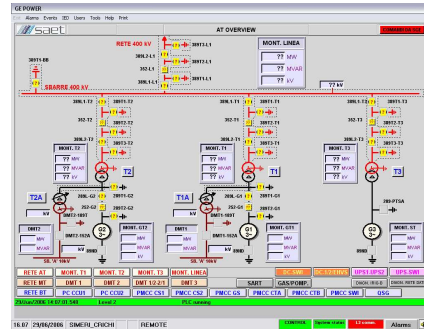


IEC 61850 PROTECTION CONTROL & MEASURING SYSTEM For SIMERI CRICHI 800 MW POWER PLANT



380 kV GIS of Simeri Crichi



GE-POWER operator screen

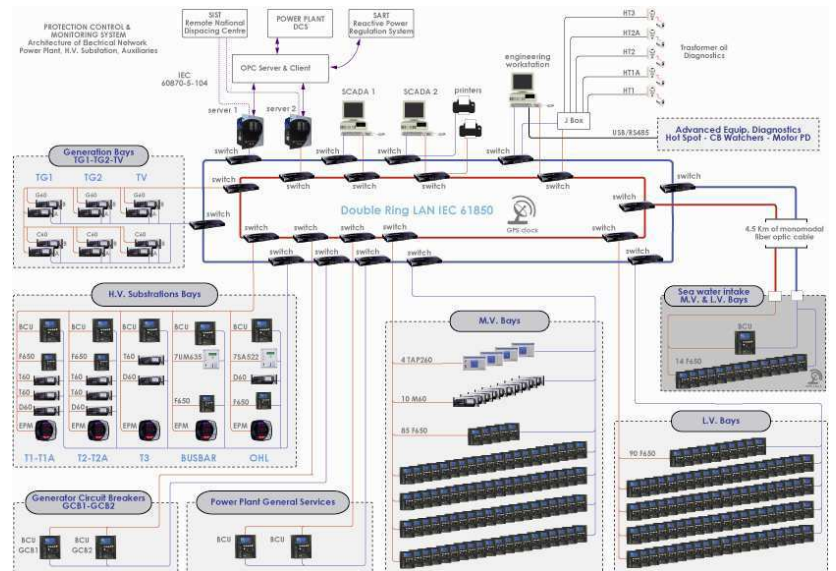


380 kV GIS conn. To 380kV line

In the new 800MW combined cycle Power Plant of Simeri Crichi for EDISON, one of the largest application of IEC 61850 for the Protection Control & Measuring system has been implemented by SAET, value added reseller (VAR) of General Electric Multilin.

The systems controls in a double (redundant) fiber optic link, the whole HV-MV-LV network of the plant, using a distributed architecture based on IED interfaced with IEC 61850 protocol. The architecture includes Nr 238 units in the same LAN: with Nr 215 GE-F650 units, Nr 17 GE-UR units (D60-T60-G60-M60-C60), but also with non GE units (Nr 4 Siemens and Nr 2 Tapcon) speaking in the same protocol.

The GE-POWER SCADA allows parametrisation supervision and control of all equipment in the LAN



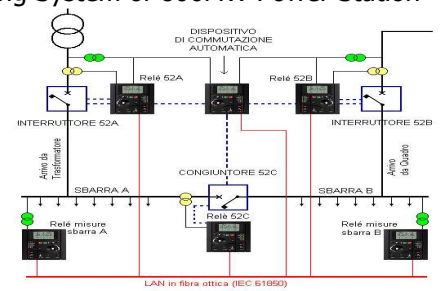
Protection Control & Measuring System of 800MW Power Station



LV-MV panels w/GE-F650 protection



GE-F650 unit used for ATS



ATS Automatic Transfer System



GE 230 MW Turbogas Turbine with GE G60 protection