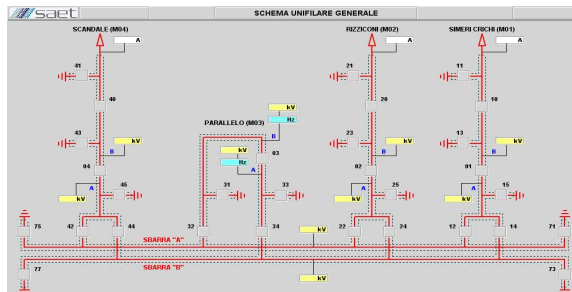


IEC 61850 PROTECTION, CONTROL AND MEASURING SYSTEM FOR MAGISANO GIS 380 KV STATION

Magisano is a 380kV Gas Insulated Station 8 Km far from Simeri-Crichi 800MW Power Station, both of EDISON S.p.A.. The Protection Control and Measuring System has been realized by **SAET**, partner of General Electric Multilin.



SCADA view of the 380kV GIS Substation

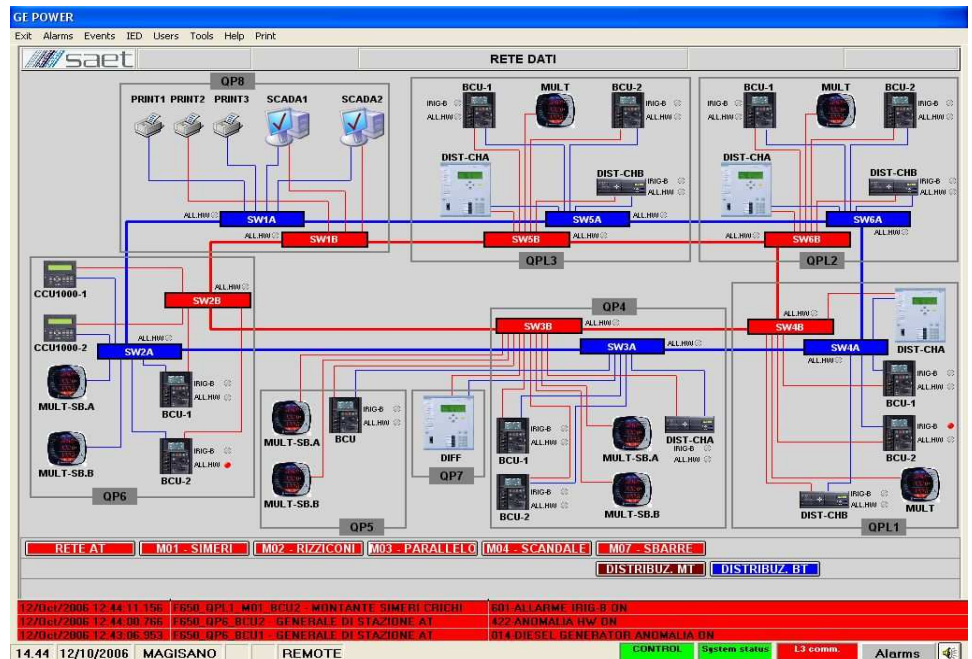


GIS of AREVA

All electric functions are managed and monitored by a Distributed Control System on a fiber optic double link interfaced with the new protocol **IEC 61850**, specially dedicated for H.V. Substations.

Commands, Measures, Protections, Status, Alarm, Digital Fault Recorder and Sequence of Events are totally integrated with the GE-POWER SCADA which has also the possibility of parameter setting of all protections.

It is to point out that with this protocol it has been possible to integrate General Electric Protections (D60 - T60 - F650) with Siemens Protections (7SA322 – 7SA320) in a unique integrated system.



Architecture of the Protection Control and Measuring System



Control Room of Magisano Substation



Bay Control Unit



Scandale-Rizziconi 380kV Bays