

## RDF APPLICATION IN CEMENT KILNS



RDF Plant in a cementery



Skid platform for RDF Plant



Receiving Bays for truck interface

The use of different fuels (i.e. RDF Refused Derived Fuel) rather than coal for Cement Kilns, is suitably applied in the Cement Plant both for cost effective and environment reasons. RDF application requires a small RDF System for the Storage, the Transport, the Feeding of RDF: this System can be integrated in the Cement Plant.

The RDF plant includes the following areas:

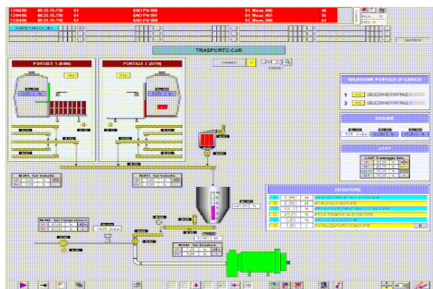
- Receiving Area with Truck Bays.
- Mechanical Transport System to the Belt Feeder.
- Belt Feeder Dosing System.
- Pneumatic Transport to the Kiln.
- Dedusting System.
- Operation & Control room.



Sleeves Filter

The peculiarity of the System performed by SAET is the Skid platform, onto which Dosing System, Pneumatic Transport System and Electrical Control Room are placed with a mobile facility which enhance the lay out solutions: the skid is transportable by truck therefore can be easily moved. The Receiving Area is with several Bays completely sealed in order to avoid dust and smell during discharging operations. Each Bay has its own Screw System lay to route RDF, though a Mechanical Transport System, to Belt Weight Feeder which is the regulating device.

The dedusting system and the final pneumatic transport to the kiln complete the plant.



Operation pages: SCADA overview



RDF Belt Feeder



Screw transport at reception



Automatic truck unloading