

SAN SEVERO Double Busbar 400 kV Substation Erection & Commissioning for Siemens Terna



Entrance to the station: Larino FG line



Aerial view 400kV double busbar



Incoming HV line

The 400MW Power Plant of San Severo (FG) is connected to the 400kV grid of RTN (TERNA) with a new double busbar 400kV switching substation provided by Siemens to TERNA.

SAET as partner of Siemens provided the erection and commissioning of the substation due to the long experience as erection company for TERNA. SAET is qualified supplier of TERNA (LESC02, HV substation) with more than 100 bays erection in 400kV-245kV-170/150kV.

Regarding the 400kV section SAET run installation of HV equipment complete of supports and HV connection, moreover the assembling and erection of OHL portal and interconnection to the grid.



Erection of OHL portal

For the MV section SAET has installed the MV panels complete with cables and 20/0,4kV transformers.

Regarding the LV section SAET installed control kiosk complete with bays control and protection panels, substation building complete with distribution, control and communication panels and auxiliaries room.

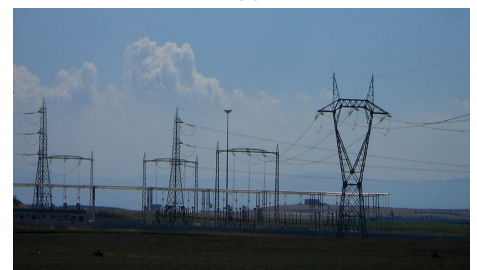
Laying, connection of distribution, control and communication cables and related MV-LV terminals.

Finishing of the delivery building and substations auxiliaries room, complete of utility systems.

SAET during final operations and commissioning for SCADA also gave technical assistance to Siemens, TERNA's direct supplier for SET bid.



Incoming HV line bay from ENPLUS Power Plant



Overview of Power Plant